

SEALED COUNTER PLATE

MC-JMP45



MC-JMP45WT

MC-JMP45BL

Features

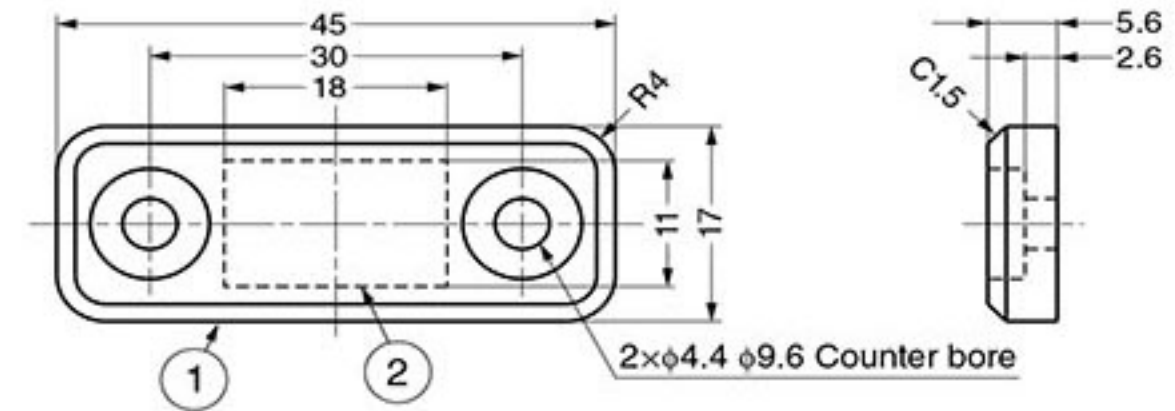
- Magnetic catch hermetically sealed in resin.
- High rust resistance, dust intrusion proof and prevents metal on metal contact.
- Great solution for kitchens, bathing and shower areas.

Recommended Screw

Tapping screw nominal 4 (truss or binding head, made of stainless steel), M4 screw (made of stainless steel).

Optional Magnetic Catch Examples:

- Rubber sealed: MC-MS50 (P.271)
- Ultra thin: MC-YN015S (P.261), MC-YN001 (P.261), MC-158,159 (P.262)
- Plastic sealed: MC-JM45 (P.270), MC-JM50 (P.271), MC-JM63G (P.269)



No.	Part Name	Material
①	Body	Polypropylene (PP)
②	Plate	Steel

Item Code	Item Name	Colour	Weight	Box	Carton
140-050-122	MC-JMP45WT	White	7.3 g	100 pcs	1,000 pcs
140-029-241	MC-JMP45BL	Black	7.3 g	100 pcs	1,000 pcs

